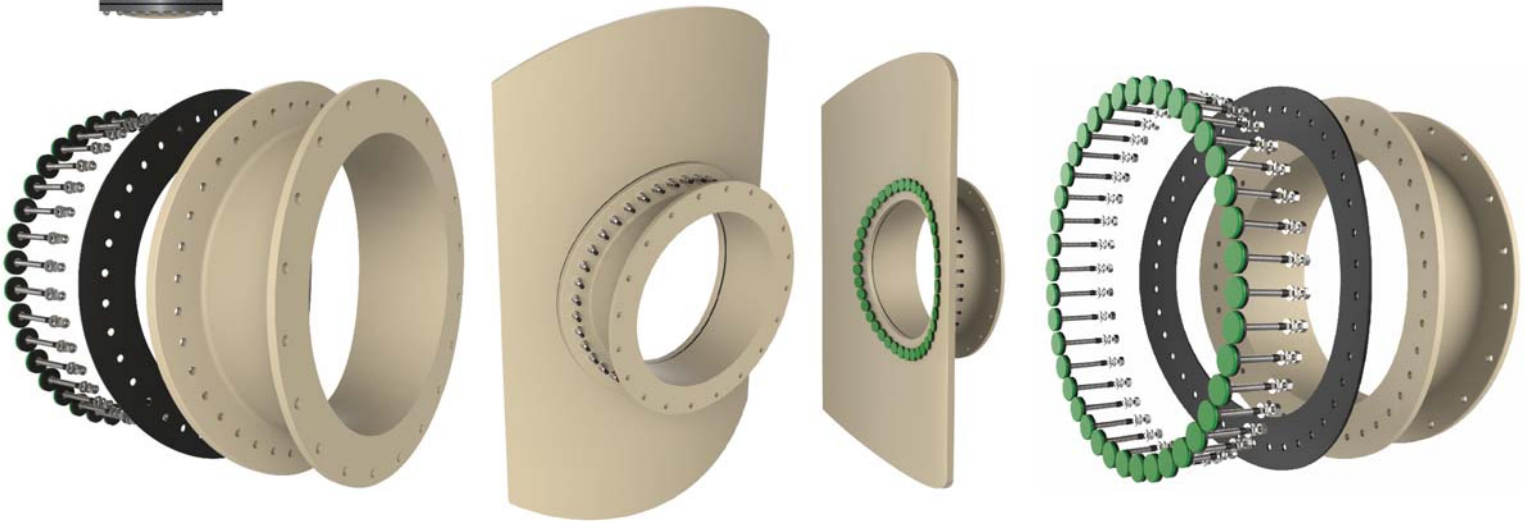




Large Tank Fittings



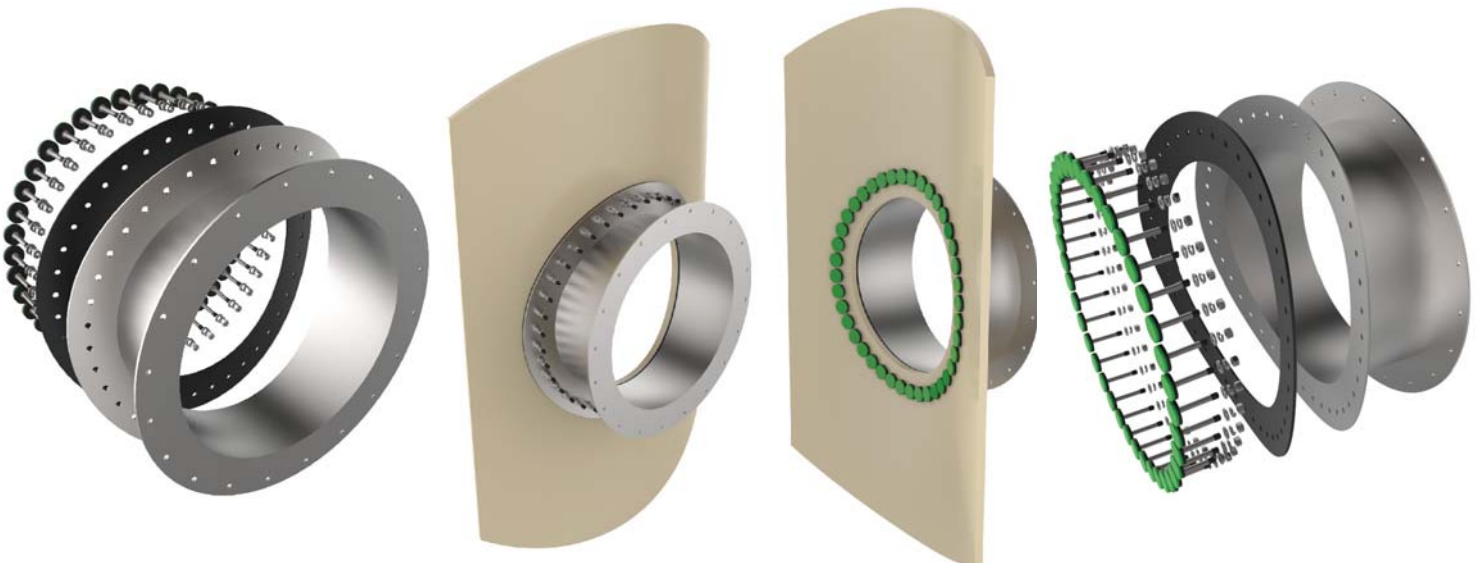
Radiused-Saddle **Fiberglass** Flanged Tank Fittings 6"-24"

The Challenge

Due to the inherent challenges associated with attaching flat fittings to round tanks, poly tank manufacturers have been limited to 6" and sometimes 8" fittings (but only for large diameter tanks). This is due to two factors; the inability to properly seal the flat fitting to a radiused surface and the stresses imposed on both the fitting and the tank. Those stresses ultimately lead to failure of the tank or the fitting, and sometimes both. In the past, this constraint has limited the use of poly tanks for applications requiring large sidewall mounted inlet and outlet connections.

The Solution

Our 6"-24" radiused tank adapters are designed to match the curvature of your tank to provide for outstanding sealing capabilities. Our innovative radiused-saddle fittings makes possible a new level of performance for poly tanks. The key to the success of our design is the elimination of stress, on the tank and on the fitting. No company has specialized in large diameter fittings for poly tanks, until now. Our fiberglass fittings and side manways have been granted U.S. Patent no. 9,464,745. *We will provide the best performance, value and service to meet your tank accessory requirements, period.*



Radiused-Saddle **Stainless Steel** Flanged Tank Fittings 6"-24"